

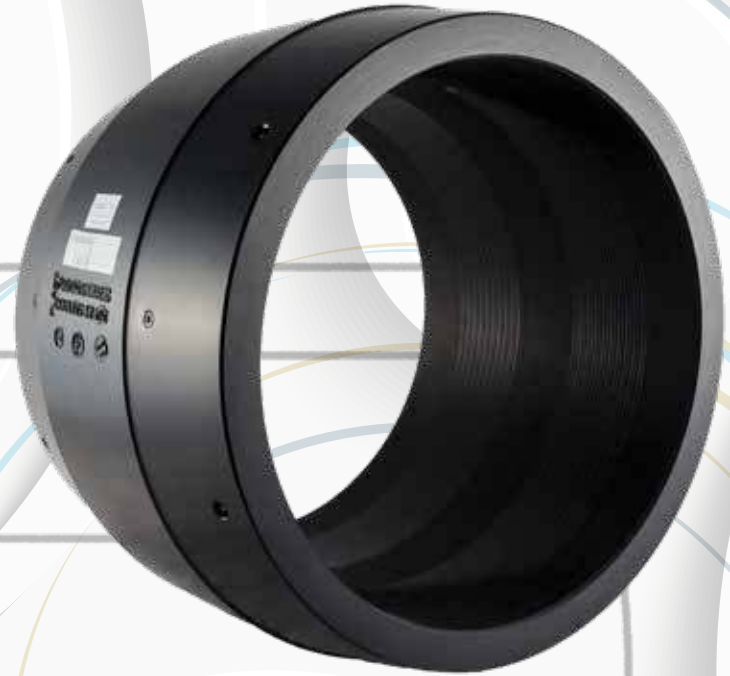
# ELECTROFUSION COUPLER

## IPS SERIES

SDR 11 IPS Electrofusion Coupler  
SDR 17 IPS Electrofusion Coupler  
SDR 7 IPS Electrofusion Coupler

# MOLDED FOR YOUR INDUSTRY

**IntegriFuse**<sup>TM</sup>



**INTEGRITY**  
Fusion Products, Inc.

TOLL FREE 1-888-770-6330

INTEGRITYFUSION.COM

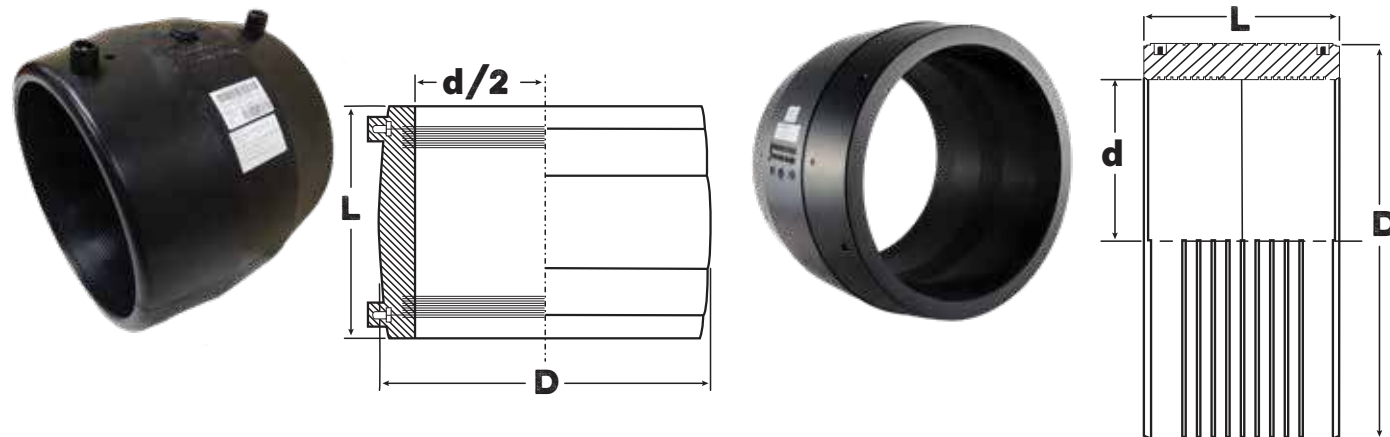
# The difference MOLDED Makes

Since 2007 Integrity Fusion Products have been known for their impressive product line of Electrofusion fittings. We continue to grow and innovate more products than ever before!

## The IntegriFuse Difference:

- Large Diameter Electrofusion Couplers
- Improved technology eliminating the need for pre-heating procedures
- Utilizes higher Amperage (105A) to create more heat, allowing the pipe to expand to help reduce any gaps between pipe and coupler
- Higher amperage allows for larger gaps to start fusion process
- Higher amperage also results in deeper melt penetration
- Wider fusion zones for increased surface melt
- Wider cold zones allowing for more flexibility in pipe stab depth
- fittings created with traceability bar codes
- All couplers through 54" are injection molded (not fabricated out of pipe or billet as other brands)
- Pop up melt indicators
- Cooling time listed on coupler indicates when the fitting joint can be fully pressure tested, eliminating the need for guesswork
- Backed by 30+ years of experience in designing, developing and producing electrofusion fittings & equipment with strict quality management standards
- FM Approved
- AWWA C906 NSF/ANSI 61

All IntegriFuse Electrofusion fittings must be installed by a qualified and experienced technician.



## INTEGRIFUSE SDR 11 IPS ELECTROFUSION COUPLERS

Water 200 PSI (ASTM / 232 PSI (ISO) - Gas 100 PSI @73° F Sustainable Operating Pressure

Suitable for use on IPS SDR 9\* to SDR 17 HDPE Pipe (Fusing from SDR 21 to SDR 32.5 may require special

NOMINAL SIZE	d/2 - ID	D	L	WEIGHT	ITEM CODE	NOTES
1" IPS	1.315"	1.7"	3.4"	0.1 lbs.	200302	
1 ¼" IPS	1.660"	2.2"	3.7"	0.2 lbs.	200303	
1 ½" IPS	1.900"	2.7"	3.9"	0.4 lbs.	200304	
2" IPS	2.375"	3.2"	4.6"	0.5 lbs.	200305	
3" IPS	3.500"	4.4"	5.0"	0.9 lbs.	200307	FM 200 / FM 232
4" IPS	4.500"	5.9"	5.9"	1.7 lbs.	200310	FM 200 / FM 232
5" IPS	5.563"	6.9"	6.5"	2.5 lbs.	200312	FM 200 / FM 232
6" IPS	6.625"	8.7"	7.9"	4.6 lbs.	200314	FM 200 / FM 232
8" IPS	8.625"	10.7"	8.9"	8.4 lbs.	200317	FM 200 / FM 232
10" IPS	10.750"	13.3"	9.8"	14.9 lbs.	200320	FM 200 / FM 232
12" IPS	12.750"	15.9"	11.4"	24.5 lbs.	200323	FM 200 / FM 232
14" IPS	14.000"	17.2"	11.8"	27.0 lbs.	200326	FM 200 / FM 232
16" IPS	16.000"	19.8"	13.9"	32.0 lbs.	200329	FM 200 / FM 232
18" IPS (1)	18.000"	22.3"	16.7"	75.0 lbs.	200332	FM 200 / FM 232
20" IPS (1)	20.000"	24.8"	18.0"	97.0 lbs.	200335	FM 200 / FM 232
22" IPS (1)	22.000"	27.4"	19.5"	123.0 lbs.	200336	FM 200 / FM 232
24" IPS (1)	24.000"	30.6"	19.8"	157.0 lbs.	200338	FM 200 / FM 232

### (1) Dual fusion zones (2) Requires the I Fuse 105 EF Processor for fusion

\* Coupler can be fused to SDR 9 pipe, but is only pressure rated to SDR 11. Not to be used in SDR 9 fully pressure rated applications

Integrity Fusion Products, Inc.  
270 Parkade Court . Peachtree City, GA 30269  
P: 1-888-770-6330 • P: 770-632-7530 • F: 770-632-7540  
E: Info@IntegrityFusion.com



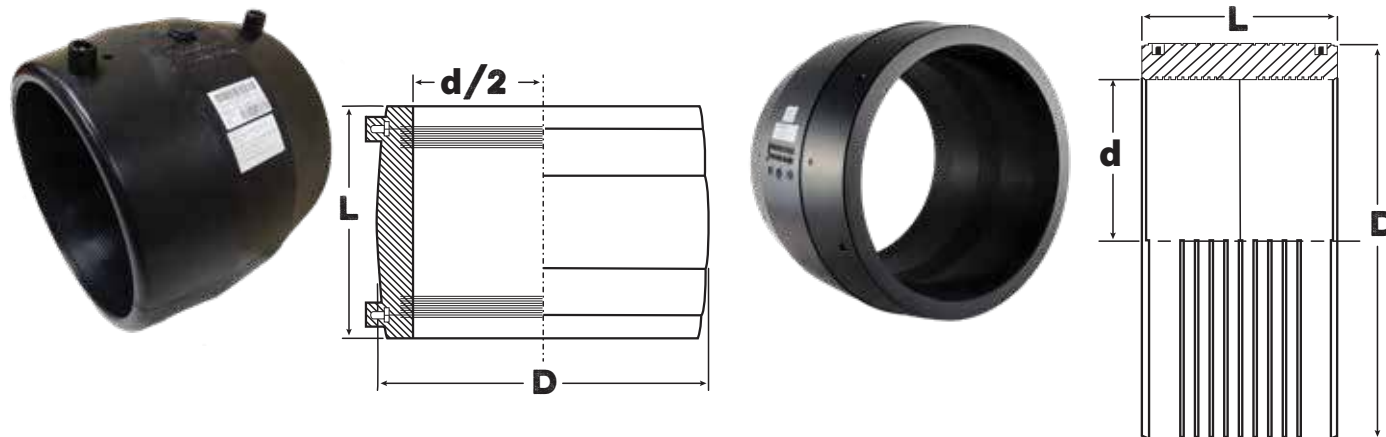
# The difference MOLDED Makes

Since 2007 Integrity Fusion Products have been known for their impressive product line of Electrofusion fittings. We continue to grow and innovate more products than ever before!

## The IntegriFuse Difference:

- Large Diameter Electrofusion Couplers
- Improved technology eliminating the need for pre-heating procedures
- Utilizes higher Amperage (105A) to create more heat, allowing the pipe to expand to help reduce any gaps between pipe and coupler
- Higher amperage allows for larger gaps to start fusion process
- Higher amperage also results in deeper melt penetration
- Wider fusion zones for increased surface melt
- Wider cold zones allowing for more flexibility in pipe stab depth
- fittings created with traceability bar codes
- All couplers through 54" are injection molded (not fabricated out of pipe or billet as other brands)
- Pop up melt indicators
- Cooling time listed on coupler indicates when the fitting joint can be fully pressure tested, eliminating the need for guesswork
- Backed by 30+ years of experience in designing, developing and producing electrofusion fittings & equipment with strict quality management standards
- FM Approved
- AWWA C906 NSF/ANSI 61

All IntegriFuse Electrofusion fittings must be installed by a qualified and experienced technician.



## INTEGRIFUSE SDR 11 IPS ELECTROFUSION COUPLERS

Water 200 PSI (ASTM / 232 PSI (ISO) - Gas 100 PSI @73° F Sustainable Operating Pressure

Suitable for use on IPS SDR 9\* to SDR 17 HDPE Pipe (Fusing from SDR 21 to SDR 32.5 may require special

NOMINAL SIZE	d/2 - ID	D	L	WEIGHT	ITEM CODE	NOTES
26" IPS (1) (2)	26.000"	31.9"	20.2"	171.0 lbs.	200339	FM 200
28" IPS (1) (2)	28.000"	34.5"	20.7"	203.0 lbs.	200341	FM 200
30" IPS (1) (2)	30.000"	37.0"	20.7"	238.0 lbs.	200343	
32" IPS (1) (2)	32.000"	39.6"	20.7"	274.0 lbs.	200345	Fits 30" DIPS
34" IPS (1) (2)	34.000"	42.1"	21.7"	308.7 lbs.	200355	
36" IPS (1) (2)	36.000"	44.1"	21.1"	319.7 lbs.	200347	
42" IPS (1) (2)	42.000"	51.2"	22.6"	465.2 lbs.	200349	
48" IPS (1) (2)	48.000"	58.7"	26.2"	661.4 lbs.	200351	

### (1) Dual fusion zones (2) Requires the I Fuse 105 EF Processor for fusion

\* Coupler can be fused to SDR 9 pipe, but is only pressure rated to SDR 11. Not to be used in SDR 9 fully pressure rated applications

Integrity Fusion Products, Inc.  
270 Parkade Court . Peachtree City, GA 30269  
P: 1-888-770-6330 • P: 770-632-7530 • F: 770-632-7540  
E: Info@IntegrityFusion.com



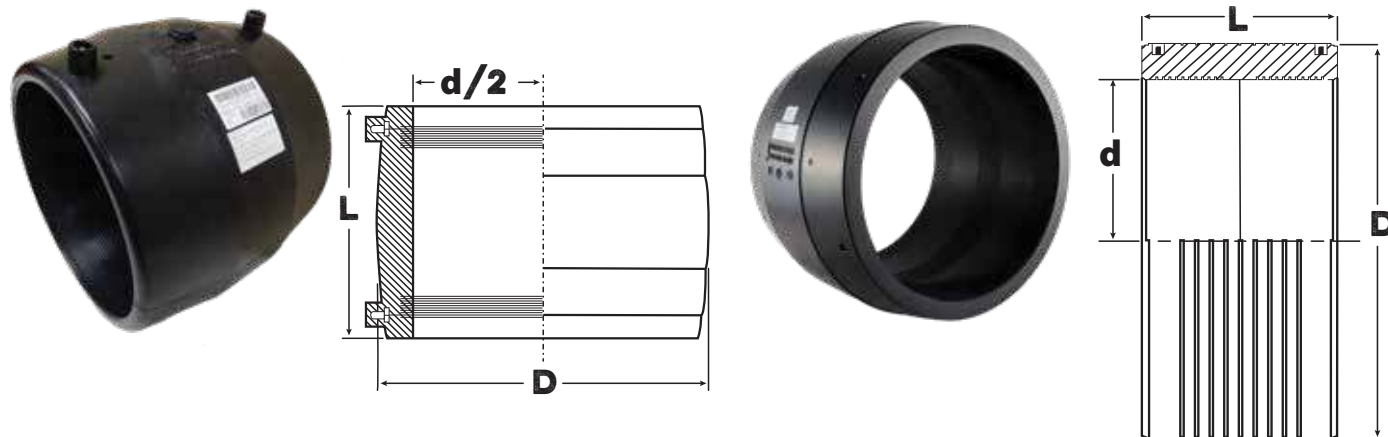
# The difference MOLDED Makes

Since 2007 Integrity Fusion Products have been known for their impressive product line of Electrofusion fittings. We continue to grow and innovate more products than ever before!

## The IntegriFuse Difference:

- Large Diameter Electrofusion Couplers
- Improved technology eliminating the need for pre-heating procedures
- Utilizes higher Amperage (105A) to create more heat, allowing the pipe to expand to help reduce any gaps between pipe and coupler
- Higher amperage allows for larger gaps to start fusion process
- Higher amperage also results in deeper melt penetration
- Wider fusion zones for increased surface melt
- Wider cold zones allowing for more flexibility in pipe stab depth
- fittings created with traceability bar codes
- All couplers through 54" are injection molded (not fabricated out of pipe or billet as other brands)
- Pop up melt indicators
- Cooling time listed on coupler indicates when the fitting joint can be fully pressure tested, eliminating the need for guesswork
- Backed by 30+ years of experience in designing, developing and producing electrofusion fittings & equipment with strict quality management standards
- FM Approved
- AWWA C906 NSF/ANSI 61

All IntegriFuse Electrofusion fittings must be installed by a qualified and experienced technician.



## INTEGRIFUSE SDR 17 IPS ELECTROFUSION COUPLERS

Water 125 PSI (ASTM / 145 PSI (ISO) - Gas 100 PSI @73° F Sustainable Operating Pressure  
Suitable for use on IPS SDR 17 to SDR 26 HDPE Pipe (Barcode for SDR 32.5 upon request)

NOMINAL SIZE	d/2 - ID	D	L	WEIGHT	ITEM CODE	NOTES
22" IPS (1)	22.000"	25.0"	17.9"	TBD	200360	FM 150
24" IPS (1)	24.000"	28.0"	19.9"	100.0 lbs.	200361	FM 150
26" IPS (1) (2)	26.000"	29.6"	19.7"	TBD	200362	FM 150
28" IPS (1) (2)	28.000"	31.9"	19.3"	119.0 lbs.	200340	FM 150
30" IPS (1) (2)	30.000"	34.3"	19.3"	166.0 lbs.	200342	FM 150
32" IPS (1) (2)	32.000"	36.6"	19.7"	153.0 lbs.	200344	FM 150
34" IPS (1) (2)	34.000"	38.7"	20.5"	TBD	200363	FM 150
36" IPS (1) (2)	36.000"	40.9"	20.1"	192.0 lbs.	200346	FM 150
42" IPS (1) (2)	42.000"	48.0"	21.3"	278.0 lbs.	200348	FM 150
48" IPS (1) (2)	48.000"	54.5"	25.2"	353.0 lbs.	200350	FM 150
54" IPS (1) (2)	54.000"	61.3"	24.80"		200355	SDR 15.5/17

(1) Dual fusion zones (2) Requires the I Fuse 105 EF Processor for fusion

Integrity Fusion Products, Inc.  
270 Parkade Court . Peachtree City, GA 30269  
P: 1-888-770-6330 • P: 770-632-7530 • F: 770-632-7540  
E: Info@IntegrityFusion.com



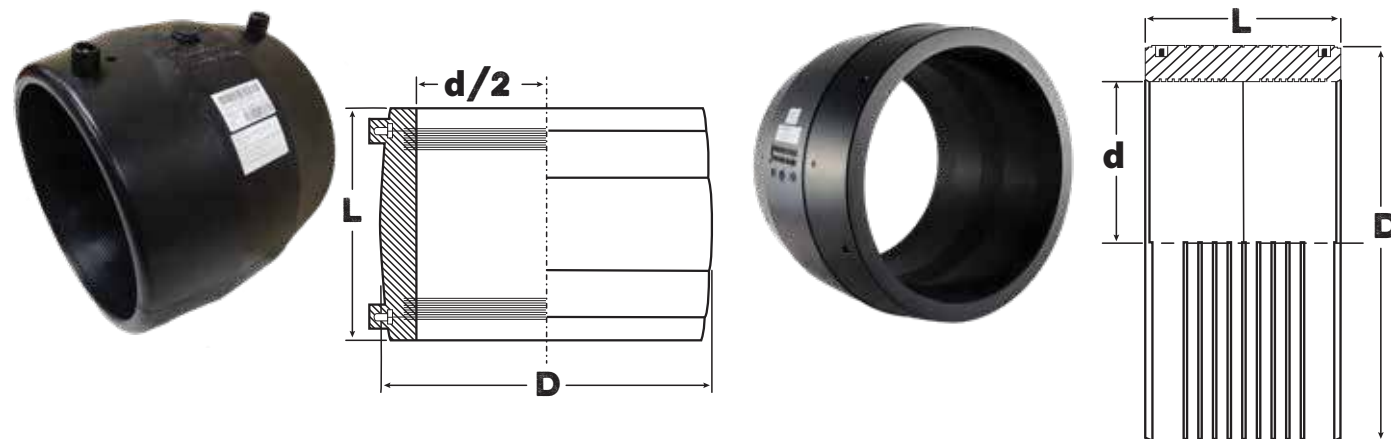
# The difference MOLDED Makes

Since 2007 Integrity Fusion Products have been known for their impressive product line of Electrofusion fittings. We continue to grow and innovate more products than ever before!

## The IntegriFuse Difference:

- Large Diameter Electrofusion Couplers
- Improved technology eliminating the need for pre-heating procedures
- Utilizes higher Amperage (105A) to create more heat, allowing the pipe to expand to help reduce any gaps between pipe and coupler
- Higher amperage allows for larger gaps to start fusion process
- Higher amperage also results in deeper melt penetration
- Wider fusion zones for increased surface melt
- Wider cold zones allowing for more flexibility in pipe stab depth
- fittings created with traceability bar codes
- All couplers through 54" are injection molded (not fabricated out of pipe or billet as other brands)
- Pop up melt indicators
- Cooling time listed on coupler indicates when the fitting joint can be fully pressure tested, eliminating the need for guesswork
- Backed by 30+ years of experience in designing, developing and producing electrofusion fittings & equipment with strict quality management standards
- FM Approved
- AWWA C906 NSF/ANSI 61

All IntegriFuse Electrofusion fittings must be installed by a qualified and experienced technician.



## INTEGRIFUSE SDR 7 IPS ELECTROFUSION COUPLERS

Water 330 PSI (ASTM) / 362 PSI (ISO) | Gas - 125 PSI @ 73° F Sustainable Maximum Operating Pressure  
Suitable for use on IPS SDR 7 to SDR 9 HDPE Pipe only

NOMINAL SIZE	d/2 - ID	D	L	WEIGHT	ITEM CODE	NOTES
2" IPS	2.375"	3.46"	4.53"	0.6 lbs	200306	FM 267 / FM 400
3" IPS	3.500"	4.92"	5.20"	1.6 lbs	200308	FM 267 / FM 400
4" IPS	4.500"	6.30"	6.30"	3.1 lbs	200311	FM 267 / FM 400
6" IPS	6.625"	9.33"	7.87"	8.2 lbs	200315	FM 267 / FM 400
8" IPS	8.625"	12.13"	9.84"	17.3 lbs	200318	FM 267 / FM 400
10" IPS	10.750"	15.16"	10.83"	31.0 lbs	200321	FM 267 / FM 400
12" IPS	12.750"	18.50"	13.94"	65.0 lbs	200324	FM 267 / FM 400
14" IPS	14.000"	19.53"	13.78"	70.5 lbs	200327	FM 267 / FM 400
16" IPS	16.000"	22.44"	15.87"	101.0 lbs	200330	FM 267 / FM 400
18" IPS (1)	18.000"	25.00"	17.91"	140.0 lbs	200333	FM 267 / FM 400
20" IPS (1)	20.000"	28.00"	18.50"	TBD	200357	FM 267 / FM 400
22" IPS (1)	22.000"	30.90"	19.70"	TBD	200358	FM 267 / FM 400
24" IPS (1)	24.000"	33.60"	20.70"	TBD	200359	FM 267 / FM 400

(1) Dual fusion zones (2) Requires the I Fuse 105 EF Processor for fusion

Integrity Fusion Products, Inc.  
270 Parkade Court . Peachtree City, GA 30269  
P: 1-888-770-6330 • P: 770-632-7530 • F: 770-632-7540  
E: Info@IntegrityFusion.com

