

45°  
BENDS

MOLDED  
FOR YOUR  
INDUSTRY

IntegriFuse™



REVISED AUGUST 18, 2023

TOLL FREE 1-888-770-6330

 **INTEGRITY**  
Fusion Products, Inc.

INTEGRITYFUSION.COM

# 45° BENDS

## The difference MOLDED Makes

Molded 45 elbows from Integrity Fusion Products offer performance, availability, and value that eliminate the need for fabricated fittings.

The molded difference includes:

- No inner fusion beads
- Fully Pressure Rated
- Wall thickness remains consistent throughout

IntegriFuse fittings are manufactured from 100% Virgin Resin with black high density bimodal polyethylene copolymer designed for use in, but not limited to, potable water, natural gas, industrial, landfill, oil & gas, and mining applications.

IntegriFuse fittings meet ASTM-D2513( & ASTM-D3261 requirements (where applicable).

Butt fusion, electrofusion, and transition fittings meet AWWA C-901/C-906, NSF/ANSI/CAN 61 and NSF/ANSI 372(where applicable). IntegriFuse fittings are manufactured with resin having a material designation code of PE 3408, PE3608, PE 4710, and PE 100. FM Approved.

Integrity Fusion Products, Inc.

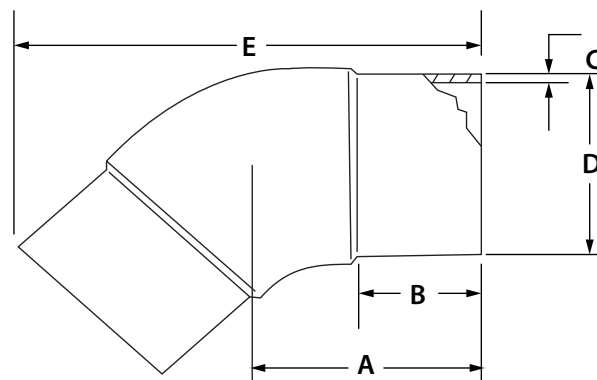
270 Parkade Court

Peachtree City, GA 30269

P: 1-888-770-6330 • P: 770-632-7530

F: 770-632-7540

E: [Info@IntegrityFusion.com](mailto:Info@IntegrityFusion.com)



## IPS

### SDR 17 (Standard Dimension Ratio) 125 PSI (Working Pressure at 73.4° F)

Nominal Size	A	B	C	D	E	Weight	Item Code
2" IPS	3.23"	2.64"	0.140"	2.375"	6.38"	0.3 lbs.	100002
3" IPS	4.72"	3.86"	0.206"	3.500"	9.33"	0.9 lbs.	100006
4" IPS	5.31"	4.21"	0.265"	4.500"	10.63"	1.7 lbs.	100010
6" IPS	6.89"	5.35"	0.390"	6.625"	14.09"	4.4 lbs.	100014
8" IPS	8.46"	6.54"	0.507"	8.625"	17.48"	9.8 lbs.	100018
10" IPS	10.04"	7.64"	0.632"	10.750"	20.94"	14.9 lbs.	100022
12" IPS	10.63"	7.80"	0.750"	12.750"	22.64"	22.1 lbs.	100024

### SDR 11 (Standard Dimension Ratio) 200 PSI (Working Pressure at 73.4° F)

Nominal Size	A	B	C	D	E	Weight	Item Code	Notes
2" IPS	3.23"	2.64"	0.216"	2.375"	6.38"	0.4 lbs.	100001	FM 200
3" IPS	4.72"	3.86"	0.318"	3.500"	9.33"	1.2 lbs.	100005	FM 200
4" IPS	5.31"	4.21"	0.409"	4.500"	10.63"	2.1 lbs.	100009	FM 200
6" IPS	6.89"	5.35"	0.602"	6.625"	14.09"	6.1 lbs.	100013	FM 200
8" IPS	8.46"	6.54"	0.784"	8.625"	17.48"	12.6 lbs.	100017	FM 200
10" IPS	10.04"	7.64"	0.977"	10.750"	20.94"	21.3 lbs.	100021	FM 200
12" IPS	10.63"	7.80"	1.159"	12.750"	22.64"	31.4 lbs.	100023	FM 200

# 45° BENDS

## The difference MOLDED Makes

Molded 45 elbows from Integrity Fusion Products offer performance, availability, and value that eliminate the need for fabricated fittings.

The molded difference includes:

- No inner fusion beads
- Fully Pressure Rated
- Wall thickness remains consistent throughout

IntegriFuse fittings are manufactured from 100% Virgin Resin with black high density bimodal polyethylene copolymer designed for use in, but not limited to, potable water, natural gas, industrial, landfill, oil & gas, and mining applications.

IntegriFuse fittings meet ASTM-D2513 & ASTM-D3261 requirements (where applicable).

Butt fusion, electrofusion, and transition fittings meet AWWA C-901/C-906, NSF/ANSI/CAN 61 and NSF/ANSI 372 (where applicable). IntegriFuse fittings are manufactured with resin having a material designation code of PE 3408, PE3608, PE 4710, and PE 100. FM Approved.

Integrity Fusion Products, Inc.

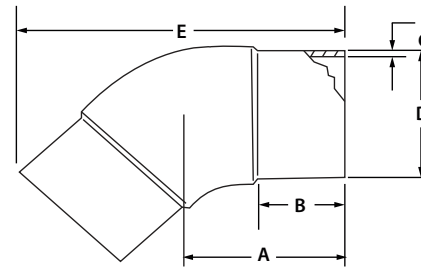
270 Parkade Court

Peachtree City, GA 30269

P: 1-888-770-6330 • P: 770-632-7530

F: 770-632-7540

E: Info@IntegrityFusion.com



### IPS

**SDR 9** (Standard Dimension Ratio) 255 PSI (Working Pressure at 73.4° F)

Nominal Size	A	B	C	D	E	Weight	Item Code	Notes
2" IPS	3.23"	2.64"	0.264"	2.375"	6.38"	0.4 lbs.	100004	FM 250
3" IPS	4.72"	3.86"	0.389"	3.500"	9.33"	1.4 lbs.	100008	FM 250
4" IPS	5.31"	4.21"	0.500"	4.500"	10.63"	2.6 lbs.	100012	FM 250
6" IPS	6.89"	5.35"	0.736"	6.625"	14.09"	7.2 lbs.	100016	FM 250
8" IPS	8.46"	6.54"	0.958"	8.625"	17.48"	14.6 lbs.	100020	FM 250
10" IPS	10.04"	7.64"	1.194"	10.75"	20.94"	16.4 lbs.	100043	—
12" IPS	10.63"	7.8"	1.417"	12.75"	22.64"	41.1 lbs.	100030	—

**SDR 7** (Standard Dimension Ratio) 335 PSI (Working Pressure at 73.4° F)

Nominal Size	A	B	C	D	E	Weight	Item Code	Notes
2" IPS	3.23"	2.64"	0.339"	2.375"	6.38"	0.5 lbs.	100003	FM 250
3" IPS	4.72"	3.86"	0.500"	3.500"	9.33"	1.7 lbs.	100007	FM 250
4" IPS	5.31"	4.21"	0.643"	4.500"	10.63"	3.2 lbs.	100011	FM 250
6" IPS	6.89"	5.35"	0.946"	6.625"	14.09"	8.7 lbs.	100015	FM 250
8" IPS	8.46"	6.54"	1.232"	8.625"	17.48"	17.9 lbs.	100019	FM 250
10" IPS	10.04"	7.64"	1.19"	10.75"	20.94"		100044	—
12" IPS	10.63"	7.80"	1.41"	12.75"	22.64"		100031	—

### DIPS

**SDR 11** (Standard Dimension Ratio) 200 PSI (Working Pressure at 73.4° F)

Nominal Size	A	B	C	D	E	Weight	Item Code	Notes
4" DIPS	6.05"	4.10"	0.436"	4.800"	12.00"	3.2 lbs.	100025	FM 200
6" DIPS	7.16"	5.10"	0.627"	6.900"	14.56"	7.94 lbs.	100026	FM 200
8" DIPS	8.32"	5.20"	0.823"	9.050"	17.56"	17.4 lbs.	100027	FM 200
10" DIPS	11.58"	5.20"	0.823"	9.050"	16.33"	19.8 lbs.	100028	FM 200
12" DIPS	11.58"	5.20"	0.823"	9.050"	16.33"	19.8 lbs.	100029	FM 200

