

90°
BENDS

MOLDED
FOR YOUR
INDUSTRY

IntegriFuse™



REVISED AUGUST 18, 2023

TOLL FREE 1-888-770-6330

 **INTEGRITY**
Fusion Products, Inc.

INTEGRITYFUSION.COM

90° BENDS

The difference MOLDED Makes

Molded 90 elbows from Integrity Fusion Products offer performance, availability, and value that eliminate the need for fabricated fittings.

The molded difference includes:

- No inner fusion beads
- Fully Pressure Rated
- Wall thickness remains consistent throughout

IntegriFuse fittings are manufactured from 100% Virgin Resin with black high density bimodal polyethylene copolymer designed for use in, but not limited to, potable water, natural gas, industrial, landfill, oil & gas, and mining applications.

IntegriFuse fittings meet ASTM-D2513& ASTM-D3261 requirements (where applicable).

Butt fusion, electrofusion, and transition fittings meet AWWA C-901/C-906, NSF/ANSI/CAN 61 and NSF/ANSI 372 (where applicable). IntegriFuse fittings are manufactured with resin having a material designation code of PE 3408, PE3608, PE 4710, and PE 100. FM Approved.

Integrity Fusion Products, Inc.

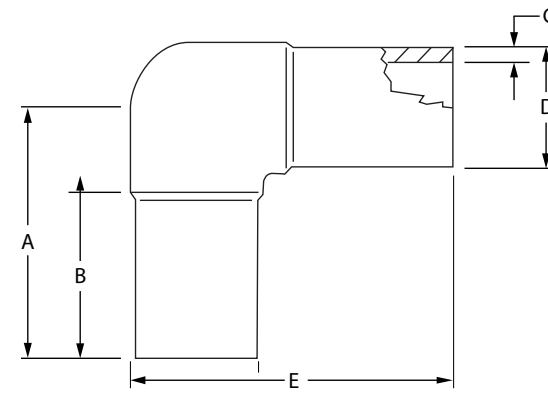
270 Parkade Court

Peachtree City, GA 30269

P: 1-888-770-6330 • P: 770-632-7530

F: 770-632-7540

E: Info@IntegrityFusion.com



IPS

SDR 17 (Standard Dimension Ratio) 125 PSI (Working Pressure at 73.4° F)

Nominal Size	A	B	C	D	E	Weight	Item Code
2" IPS	4.36"	2.64"	0.140"	2.375"	5.63"	0.4 lbs.	100106
3" IPS	5.85"	3.50"	0.206"	3.500"	7.73"	1.1 lbs.	100110
4" IPS	6.85"	3.80"	0.265"	4.500"	9.21"	2.0 lbs.	100114
6" IPS	8.94"	4.75"	0.390"	6.625"	12.40"	5.4 lbs.	100118
8" IPS	11.81"	7.20"	0.507"	8.625"	16.13"	12.5 lbs.	100122
10" IPS	13.78"	8.27"	0.632"	10.750"	19.15"	22.0 lbs.	100126
12" IPS	14.96"	8.46"	0.750"	12.750"	21.33"	36.7 lbs.	100128

SDR 11 (Standard Dimension Ratio) 200 PSI (Working Pressure at 73.4° F)

Nominal Size	A	B	C	D	E	Weight	Item Code	Notes
¾" IPS	3.19"	2.14"	0.095"	1.050"	3.82"	0.1 lbs.	100100	-
1" IPS	3.31"	2.18"	0.120"	1.315"	4.06"	0.2 lbs.	100101	-
1 ¼" IPS	3.48"	2.15"	0.151"	1.660"	4.41"	0.3 lbs.	100102	-
1 ½" IPS	3.92"	2.37"	0.173"	1.900"	5.00"	0.4 lbs.	100103	-
2" IPS	4.36"	2.64"	0.216"	2.375"	5.63"	0.5 lbs.	100105	FM 200
3" IPS	5.85"	3.50"	0.318"	3.500"	7.73"	1.6 lbs.	100109	FM 200
4" IPS	6.85"	3.80"	0.409"	4.500"	9.21"	2.8 lbs.	100113	FM 200
6" IPS	8.94"	4.75"	0.602"	6.625"	12.40"	7.7 lbs.	100117	FM 200
8" IPS	11.81"	7.20"	0.784"	8.625"	16.13"	17.3 lbs.	100121	FM 200
10" IPS	13.78"	8.27"	0.977"	10.750"	19.15"	30.1 lbs.	100125	FM 200
12" IPS	14.96"	8.46"	1.159"	12.750"	21.33"	49.9 lbs.	100127	FM 200

90° BENDS

The difference MOLDED Makes

Molded 90 elbows from Integrity Fusion Products offer performance, availability, and value that eliminate the need for fabricated fittings.

The molded difference includes:

- No inner fusion beads
- Fully Pressure Rated
- Wall thickness remains consistent throughout

IntegriFuse fittings are manufactured from 100% Virgin Resin with black high density bimodal polyethylene copolymer designed for use in, but not limited to, potable water, natural gas, industrial, landfill, oil & gas, and mining applications.

IntegriFuse fittings meet ASTM-D2513& ASTM-D3261 requirements (where applicable).

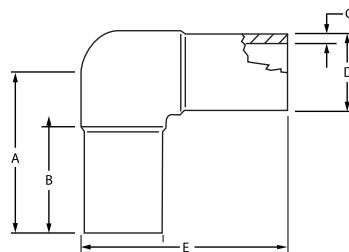
Butt fusion, electrofusion, and transition fittings meet AWWA C-901/C-906, NSF/ANSI/CAN 61 and NSF/ANSI 372 (where applicable). IntegriFuse fittings are manufactured with resin having a material designation code of PE 3408, PE3608, PE 4710, and PE 100. FM Approved.

Integrity Fusion Products, Inc.
270 Parkade Court
Peachtree City, GA 30269

P: 1-888-770-6330 • P: 770-632-7530

F: 770-632-7540

E: Info@IntegrityFusion.com



IPS

SDR 9 (Standard Dimension Ratio) 255 PSI (Working Pressure at 73.4° F)

Nominal Size	A	B	C	D	E	Weight	Item Code	Notes
2" IPS	4.36"	2.64"	0.264"	2.375"	5.63"	0.6 lbs.	100108	FM 250
3" IPS	5.85"	3.50"	0.389"	3.500"	7.73"	1.7 lbs.	100112	FM 250
4" IPS	6.85"	3.80"	0.500"	4.500"	9.21"	3.3 lbs.	100116	FM 250
6" IPS	8.94"	4.75"	0.736"	6.625"	12.40"	8.8 lbs.	100120	FM 250
8" IPS	11.81"	7.20"	0.958"	8.625"	16.13"	19.6 lbs.	100124	FM 250
10" IPS	13.78"	8.27"	1.19"	10.75"	19.15"	34.7 lbs.	100136	—
12" IPS	14.96"	8.46"	1.41"	12.75"	21.33"	57.5 lbs.	100134	—

SDR 7 (Standard Dimension Ratio) 335 PSI (Working Pressure at 73.4° F)

Nominal Size	A	B	C	D	E	Weight	Item Code	Notes
2" IPS	4.36"	2.64"	0.339"	2.375"	5.63"	0.7 lbs.	100107	FM 250
3" IPS	5.85"	3.50"	0.500"	3.500"	7.73"	2.2 lbs.	100111	FM 250
4" IPS	6.85"	3.80"	0.643"	4.500"	9.21"	4.0 lbs.	100115	FM 250
6" IPS	8.94"	4.75"	0.946"	6.625"	12.40"	10.9 lbs.	100119	FM 250
8" IPS	11.81"	7.20"	1.232"	8.625"	16.13"	23.9 lbs.	100123	FM 250
10" IPS	13.78"	8.27"	1.54"	10.75"	19.15"	42.75 lbs.	100137	—
12" IPS	14.96"	8.46"	1.82"	12.75"	21.33"	69.05 lbs.	100135	—

DIPS

SDR 11 (Standard Dimension Ratio) 200 PSI (Working Pressure at 73.4° F)

Nominal Size	A	B	C	D	E	Weight	Item Code	Notes
4" DIPS	7.55"	4.10"	0.436"	4.800"	10.04"	3.2 lbs.	100129	FM 200
6" DIPS	9.67"	5.10"	0.627"	6.900"	13.34"	8.7 lbs.	100130	FM 200
8" DIPS	11.58"	5.20"	0.823"	9.050"	16.33"	19.5 lbs.	100131	FM 200
10" DIPS	13.00"	5.5"	1.010"	11.10"	18.00"	28.5 lbs.	100132	FM 200
12" DIPS	14.00"	5.87"	1.200"	13.20"	20.00"	43.8 lbs.	100133	FM 200

