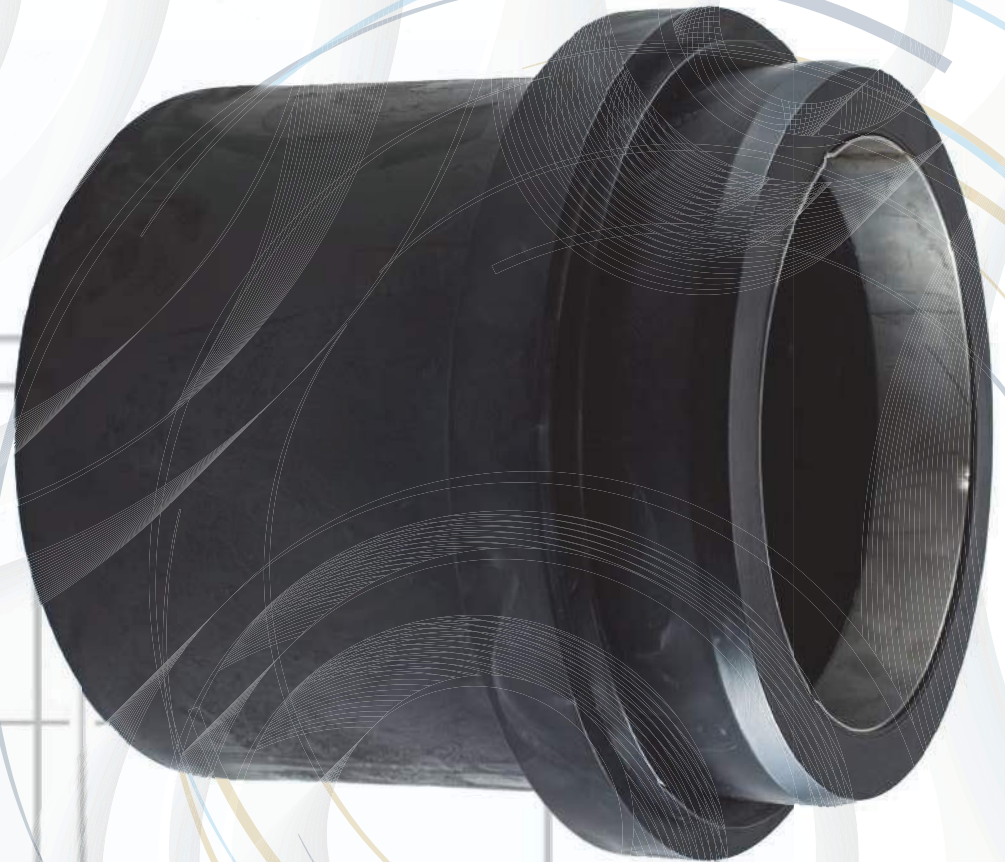


MJ
ADAPTERS

MOLDED
FOR YOUR
INDUSTRY

IntegriFuse™



 **INTEGRITY**
Fusion Products, Inc.

TOLL FREE 1-888-770-6330

INTEGRITYFUSION.COM

The difference MOLDED Makes

Molded MJ Adapters from Integrity Fusion Products have quickly become a market leader. By injection molding our MJ Adapters, we offer a high quality and consistent product every time. Our IntegriFuse brand MJ Adapters are offered with 304 Stainless Steel stiffeners or without the stiffeners to meet all project specifications. We manufacture MJ Adapters in sizes from 3" – 20", and offered in SDR 11 and SDR 9 IPS and DIPS sizes to meet your needs.

Integrity Fusion also produces MJ Accessory kits to fit our full range of MJ fittings.

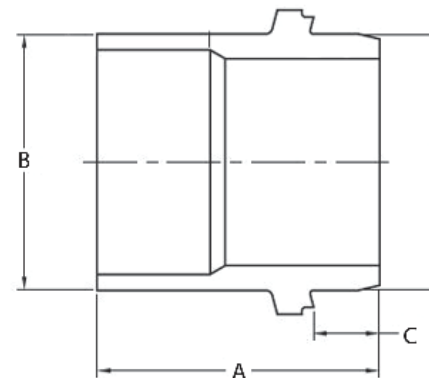
IntegriFuse Fittings are manufactured from the highest quality black high density bimodal polyethylene copolymer designed for use in, but not limited to, potable water, natural gas, industrial, landfill, oil & gas, and mining applications.

All IntegriFuse fittings meet ASTM –D2513 & ASTM D3261 (where applicable)

All IntegriFuse fittings meet AWWA C-901/ C-906, NSF/ANSI/CAN-61, and NSF/ ANSI-372 (where applicable). IntegriFuse fittings are manufactured with resin having a material designation code of PE3408, PE3608, PE4710, and PE100. FM Approved.

Integrity Fusion Products, Inc.
270 Parkade Court
Peachtree City, GA 30269
P: 1-888-770-6330 • P: 770-632-7530
F: 770-632-7540

E: Info@IntegrityFusion.com



IPS-MJ Adapter - Molded Butt Fusion

Nominal Size	SDR	A	B	C	D	Weight	Item Code	Notes
3" IPS	9	9.00"	3.500"	2.34"	3.960"	2.05/1.65	100507 / 100505	FM 250
3" IPS	11	9.00"	3.500"	2.34"	3.960"	1.85/1.45	100506 / 100504	FM 200
4" IPS	9	10.25"	4.500"	2.34"	4.800"	3.35/2.95	100515 / 100513	FM 250
4" IPS	11	10.25"	4.500"	2.34"	4.800"	3.00/2.55	100514 / 100512	FM 200
6" IPS	9	11.31"	6.625"	2.34"	6.900"	6.80/6.20	100523 / 100521	FM 250
6" IPS	11	11.31"	6.625"	2.34"	6.900"	6.15/5.50	100522 / 100520	FM 200
8" IPS	9	11.94"	8.625"	2.34"	9.050"	12.7/11.15	100531 / 100529	FM 250
8" IPS	11	11.94"	8.625"	2.34"	9.050"	10.50/9.60	100530 / 100528	FM 200
10" IPS	9	13.56"	10.750"	2.34"	11.100"	19.60/18.50	100539 / 100537	FM 250
10" IPS	11	13.56"	10.750"	2.34"	11.100"	17.10/15.90	100538 / 100536	FM 200
12" IPS	9	13.00"	12.750"	2.34"	13.200"	28.55/37.50	100547 / 100545	FM 250
12" IPS	11	13.00"	12.750"	2.34"	13.200"	24.2/23.90	100546 / 100544	FM 200
14" IPS	11	13.00"	14.000"	1.75"	15.300"	32.00/29.00	100551 / 100550	-
16" IPS	11	13.00"	16.000"	1.75"	17.400"	43.00/41.0	100555 / 100554	-
18" IPS	11	13.00"	18.000"	1.75"	19.500"	57.00/54.00	100559 / 100558	-
20" IPS	11	15.22"	20.000"	2.54"	21.600"	73.00/71.00	100563 / 100562	-

SDR 9 (Standard Dimension Ratio) 255 PSI (Working Pressure at 73.4° F)

SDR 11 (Standard Dimension Ratio) 200 PSI (Working Pressure at 73.4° F)
with or without SS Stiffeners



The difference MOLDED Makes

Molded MJ Adapters from Integrity Fusion Products have quickly become a market leader. By injection molding our MJ Adapters, we offer a high quality and consistent product every time. Our IntegriFuse brand MJ Adapters are offered with 304 Stainless Steel stiffeners or without the stiffeners to meet all project specifications. We manufacture MJ Adapters in sizes from 3" – 20", and offered in SDR 11 and SDR 9 IPS and DIPS sizes to meet your needs.

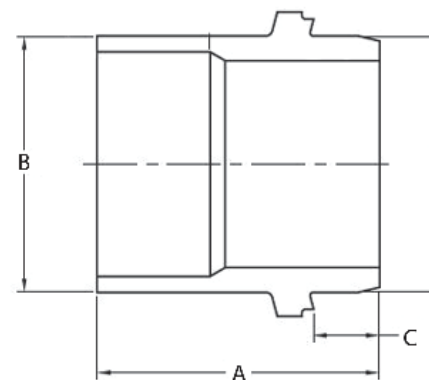
Integrity Fusion also produces MJ Accessory kits to fit our full range of MJ fittings.

IntegriFuse Fittings are manufactured from the highest quality black high density bimodal polyethylene copolymer designed for use in, but not limited to, potable water, natural gas, industrial, landfill, oil & gas, and mining applications.

All IntegriFuse fittings meet ASTM –D2513 & ASTM D3261(where applicable)

All IntegriFuse fittings meet AWWA C-901/ C-906, NSF/ANSI/CAN-61, and NSF/ ANSI-372(where applicable). IntegriFuse fittings are manufactured with resin having a material designation code of PE3408, PE3608, PE4710, and PE100. FM Approved.

Integrity Fusion Products, Inc.
270 Parkade Court
Peachtree City, GA 30269
P: 1-888-770-6330 • P: 770-632-7530
F: 770-632-7540
E: Info@IntegrityFusion.com



DIPS-MJ Adapter - Molded Butt Fusion

Nominal Size	SDR	A	B	C	D	Weight	Item Code	Notes
4" DIPS	9	10.25"	4.800"	2.34"	4.800"	3.45/3.00	100511 / 100509	FM 250
4" DIPS	11	10.25"	4.800"	2.34"	4.800"	3.10/2.65	100510 / 100508	FM 200
6" DIPS	9	11.31"	6.900"	2.34"	6.900"	7.05/6.45	100519 / 100517	FM 250
6" DIPS	11	11.31"	6.900"	2.34"	6.900"	6.33/5.70	100518 / 100516	FM 200
8" DIPS	9	11.94"	9.050"	2.34"	9.050"	12.55/11.75	100527 / 100525	FM 250
8" DIPS	11	11.94"	9.050"	2.34"	9.050"	10.90/9.95	100526 / 100524	FM 200
10" DIPS	9	13.56"	11.100"	2.34"	11.100"	19.75/18.75	100535 / 100533	FM 250
10" DIPS	11	13.56"	11.100"	2.34"	11.100"	17.35/16.30	100534 / 100532	FM 200
12" DIPS	9	13.00"	13.200"	2.34"	13.200"	28.60/27.20	100543 / 100541	FM 250
12" DIPS	11	13.00"	13.200"	2.34"	13.200"	22.90/23.75	100542 / 100540	FM 200
14" DIPS	11	14.00"	15.300"	2.22"	15.300"	36.00/34.00	100549 / 100548	-
16" DIPS	11	14.00"	17.400"	2.22"	17.400"	47.00/45.00	100553 / 100552	-
18" DIPS	11	15.22"	19.500"	2.63"	19.500"	62.00/59.00	100557 / 100556	-
20" DIPS	11	15.22"	21.600"	2.63"	21.600"	77.00/75.00	100561 / 100560	-

SDR 9 (Standard Dimension Ratio) 255 PSI (Working Pressure at 73.4° F)

SDR 11 (Standard Dimension Ratio) 200 PSI (Working Pressure at 73.4° F)
with or without SS Stiffeners

