

Product Family:	Injection Molded Butt Fusion Fitting	Fitting Design:	Reducer
Resin Status:	NSF Listed Bi-Modal Virgin Resin	Nominal Primary Pipe Sizes:	1" – 12"
Resin Type:	ASTM D3350 designated PE3408/PE4710/PE100	Nominal Pipe Standard:	IPS and DIPS
Resin Cell Class:	4455574-CC3	Currently Available SDR's:	17, 11, 9
Manufactured and tested to meet requirements of:		ASTM D2513, ASTM D3261, ANSI/AWWA C901 & C906, FM 1613, NSF 61	
For use on pipe and fittings conforming to:		ASTM D2513, ASTM D3035, ASTM F-714	

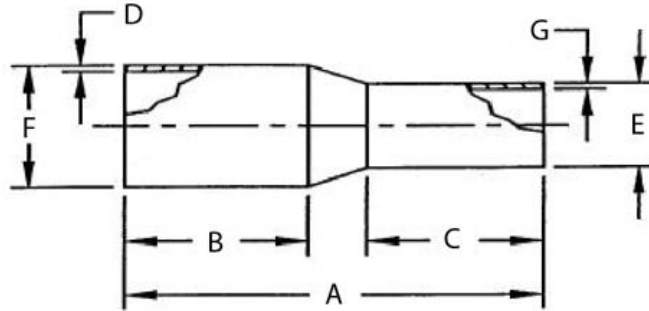
For Material and Testing information, please refer to our Molded Fitting Specification Sheet.

IPS

SDR 17 (standard dimension ratio)

125 PSI (MAOP @ 73.4° F)

Nominal Size	A [in.]	B [in.]	C [in.]	D (wall) [in.]	E (OD) [in.]	F (OD) [ins.]	G (wall) [ins.]	Weight [lbs.]	Item Code	FM Class
3 x 2 IPS	7.87	3.94	2.95	0.206	2.375	3.500	0.140	0.45	100608	----
4 x 2 IPS	9.06	4.33	2.95	0.264	2.375	4.500	0.140	0.80	100612	----
4 x 3 IPS	9.06	4.33	3.94	0.264	3.500	4.500	0.206	1.05	100616	----
6 x 3 IPS	11.03	5.06	3.71	0.390	3.500	6.625	0.206	2.05	100620	----
6 x 4 IPS	11.42	5.12	4.33	0.390	4.500	6.625	0.264	2.55	100622	----
8 x 4 IPS	12.80	5.99	4.05	0.507	4.500	8.625	0.264	4.40	100626	----
8 x 6 IPS	12.80	6.10	5.12	0.507	6.625	8.625	0.390	5.05	100628	----
10 x 6 IPS	14.06	6.16	5.29	0.632	6.625	10.70	0.390	7.55	100632	----
10 x 8 IPS	14.37	6.25	5.81	0.632	8.625	10.70	0.507	9.15	100634	----
12 x 6 IPS	16.00	6.95	5.22	0.750	6.625	12.70	0.390	11.75	100636	----
12 x 8 IPS	16.54	7.09	6.10	0.750	8.625	12.70	0.507	13.45	100638	----
12 x 10 IPS	16.54	7.09	6.69	0.750	10.70	12.70	0.632	14.05	100640	----

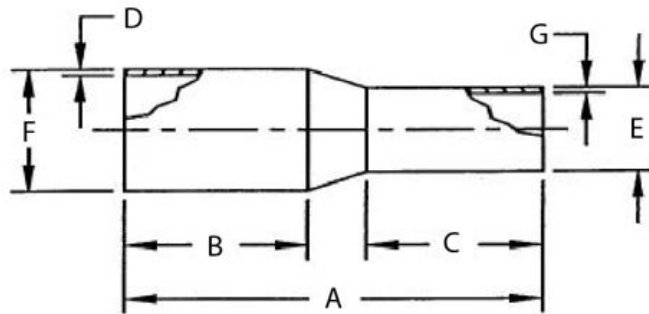


IPS

SDR 11 (standard dimension ratio)

200 PSI (MAOP @ 73.4° F)

Nominal Size	A [in.]	B [in.]	C [in.]	D (wall) [in.]	E (OD) [in.]	F (OD) [ins.]	G (wall) [ins.]	Weight [lbs.]	Item Code	FM Class
1 x ¾ IPS	4.58	2.17	2.17	0.120	1.050	1.315	0.095	0.05	100600	-----
1 ¼ x 1 IPS	4.66	2.20	2.15	0.151	1.315	1.660	0.120	0.10	100601	-----
1 ½ x 1 IPS	5.12	2.44	2.16	0.173	1.315	1.900	0.120	0.15	100602	-----
1 ½ x 1 ¼ IPS	4.83	2.44	2.17	0.173	1.660	1.900	0.151	0.15	100603	-----
2 x 1 IPS	5.62	2.53	2.13	0.216	1.315	2.375	0.120	0.20	100604	-----
2 x 1 ¼ IPS	5.34	2.53	2.15	0.216	1.660	2.375	0.151	0.20	100605	-----
2 x 1 ½ IPS	5.40	2.53	2.42	0.216	1.900	2.375	0.173	0.25	100606	-----
3 x 2 IPS	7.87	3.94	2.95	0.318	2.375	3.500	0.216	0.50	100607	FM 200
4 x 2 IPS	9.06	4.33	2.95	0.409	2.375	4.500	0.216	1.25	100611	FM 200
4 x 3 IPS	9.06	4.33	3.94	0.409	3.500	4.500	0.318	1.15	100615	FM 200
6 x 3 IPS	11.03	5.06	3.71	0.602	3.500	6.625	0.318	3.15	100619	FM 200
6 x 4 IPS	11.42	5.12	4.33	0.602	4.500	6.625	0.409	3.75	100621	FM 200
8 x 4 IPS	12.80	5.99	4.05	0.784	4.500	8.625	0.409	6.70	100625	FM 200
8 x 6 IPS	12.80	6.10	5.12	0.784	6.625	8.625	0.602	7.70	100627	FM 200
10 x 6 IPS	14.06	6.16	5.29	0.977	6.625	10.75	0.602	11.55	100631	FM 200
10 x 8 IPS	14.37	6.95	5.88	0.977	8.625	10.75	0.784	13.40	100633	FM 200
12 x 6 IPS	16.00	6.95	5.22	1.159	6.625	12.75	0.602	17.15	100635	FM 200
12 x 8 IPS	16.54	7.09	6.10	1.159	8.625	12.75	0.784	19.41	100637	FM 200
12 x 10 IPS	16.54	7.09	6.69	1.159	10.75	12.75	0.977	21.30	100639	FM 200



IPS

SDR 9 (standard dimension ratio)

255 PSI (MAOP @ 73.4° F)

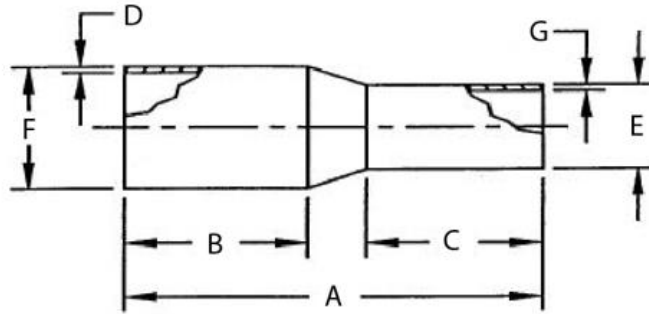
Nominal Size	A [in.]	B [in.]	C [in.]	D (wall) [in.]	E (OD) [in.]	F (OD) [ins.]	G (wall) [ins.]	Weight [lbs.]	Item Code	FM Class
3 x 2 IPS	7.87	3.94	2.95	0.389	2.375	3.500	0.264	0.75	100610	FM 250
4 x 2 IPS	9.06	4.33	2.95	0.500	2.375	4.500	0.264	1.40	100614	FM 250
4 x 3 IPS	9.06	4.33	3.94	0.500	3.500	4.500	0.389	1.45	100618	FM 250
6 x 4 IPS	11.42	5.12	4.33	0.736	4.500	6.625	0.500	3.80	100624	FM 250
8 x 6 IPS	12.80	6.10	5.12	0.958	6.625	8.625	0.736	8.80	100630	FM 250

IPS

SDR 7 (standard dimension ratio)

355 PSI (MAOP @ 73.4° F)

Nominal Size	A [in.]	B [in.]	C [in.]	D (wall) [in.]	E (OD) [in.]	F (OD) [ins.]	G (wall) [ins.]	Weight [lbs.]	Item Code	FM Class
3 x 2 IPS	7.87	3.94	2.95	0.500	2.375	3.500	0.339	1.00	100609	FM 335
4 x 2 IPS	9.06	4.33	2.95	0.643	2.375	4.500	0.339	1.75	100613	FM 335
4 x 3 IPS	9.06	4.33	3.94	0.643	3.500	4.500	0.500	2.10	100617	FM 355
6 x 4 IPS	11.42	5.12	4.33	0.946	4.500	6.625	0.643	5.20	100623	FM 335
8 x 6 IPS	12.80	6.10	5.12	1.232	6.625	8.625	0.946	10.65	100629	FM 355



DIPS

SDR 11 (standard dimension ratio)

200 PSI (MAOP @ 73.4° F)

Nominal Size	A [in.]	B [in.]	C [in.]	D (wall) [in.]	E (OD) [in.]	F (OD) [ins.]	G (wall) [ins.]	Weight [lbs.]	Item Code	FM Class
6 x 4 DIPS	11.41	5.10	4.33	0.627	4.800	6.900	0.436	4.10	100641	FM 200
8 x 6 DIPS	12.79	6.10	5.12	0.823	6.900	9.050	0.627	7.80	100642	FM 200
10 x 6 DIPS	14.00	6.16	5.29	1.010	6.900	11.10	0.627		100643	-----
10 x 8 DIPS	14.37	6.25	5.88	1.010	9.050	11.10	0.823		100647	-----
12 x 6 DIPS	16.00	6.95	5.22	1.200	6.900	13.20	0.627		100651	-----
12 x 8 DIPS	16.54	7.09	6.10	1.200	9.050	13.20	0.823		100655	-----

DIPS

SDR 9 (standard dimension ratio)

255 PSI (MAOP @ 73.4° F)

Nominal Size	A [in.]	B [in.]	C [in.]	D (wall) [in.]	E (OD) [in.]	F (OD) [ins.]	G (wall) [ins.]	Weight [lbs.]	Item Code	FM Class
10 x 6 DIPS	14.06	6.16	5.29	1.01	6.90	11.1	0.627		100644	-----
10 x 8 DIPS	14.37	6.25	5.88	1.01	9.05	11.1	0.823		100648	-----
12 x 6 DIPS	16.00	6.95	5.22	1.20	6.90	13.2	0.627		100652	-----
12 x 8 DIPS	16.54	7.09	6.10	1.20	9.05	13.2	0.823		100656	-----