

Product Family:	Injection Molded Butt Fusion Fitting	Fitting Design:	MJ Adapter
Resin Status:	NSF Listed Bi-Modal Virgin Resin	Nominal Pipe Sizes:	3" – 20"
Resin Type:	ASTM D3350 designated PE3408/PE4710/PE100	Nominal Pipe Standard:	IPS and DIPS
Resin Cell Class:	4455574-CC3	Currently Available SDR's:	11, 9
		Stiffener Material:	304 Stainless Steel

Manufactured and tested to meet requirements of:

ASTM D2513, ASTM D3261, ANSI/AWWA C901 & C906, FM 1613, NSF 61

For use on pipe and fittings conforming to:

ASTM D2513, ASTM D3035, ASTM F-714

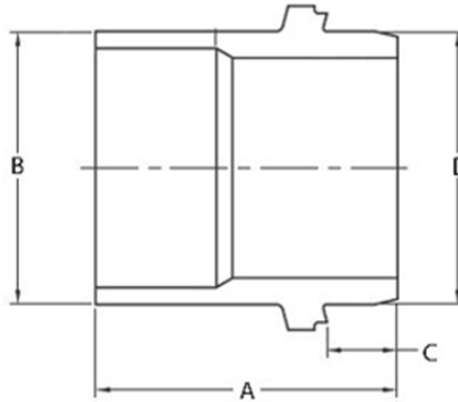
For Material and Testing information, please refer to our Molded Fitting Specification Sheet.

IPS

SDR 11 (standard dimension ratio)

200 PSI (MAOP @ 73.4° F)

Nominal Size	Note	A [in.]	B [in.]	C [in.]	D [in.]	Weight [lbs.]	Item Code	FM Class
3" IPS		9.00	3.500	2.34	3.960	1.45	100504	FM 200
3" IPS	w/stiffener	9.00	3.500	2.34	3.960	1.85	100506	FM 200
4" IPS		10.25	4.500	2.34	4.800	2.55	100512	FM 200
4" IPS	w/stiffener	10.25	4.500	2.34	4.800	3.00	100514	FM 200
6" IPS		11.31	6.625	2.34	6.900	5.50	100520	FM 200
6" IPS	w/stiffener	11.31	6.625	2.34	6.900	6.15	100522	FM 200
8" IPS		11.94	8.625	2.34	9.050	9.60	100528	FM 200
8" IPS	w/stiffener	11.94	8.625	2.34	9.050	10.50	100530	FM 200
10" IPS		13.56	10.75	2.34	11.10	15.90	100536	FM 200
10" IPS	w/stiffener	13.56	10.75	2.34	11.10	17.10	100538	FM 200
12" IPS		13.00	12.75	2.34	13.20	23.90	100544	FM 200
12" IPS	w/stiffener	13.00	12.75	2.34	13.20	24.20	100546	FM 200
14" IPS		13.00	14.00	1.75	15.30	29.00	100550	-----
14" IPS	w/stiffener	13.00	14.00	1.75	15.30	32.00	100551	-----
16" IPS		13.00	16.00	1.75	17.40	41.00	100554	-----
16" IPS	w/stiffener	13.00	16.00	1.75	17.40	43.00	100555	-----
18" IPS		13.00	18.00	1.75	19.50	54.00	100558	-----
18" IPS	w/stiffener	13.00	18.00	1.75	19.50	57.00	100559	-----
20" IPS		15.22	20.00	2.54	21.60	71.00	100562	-----
20" IPS	w/stiffener	15.22	20.00	2.54	21.60	73.00	100563	-----

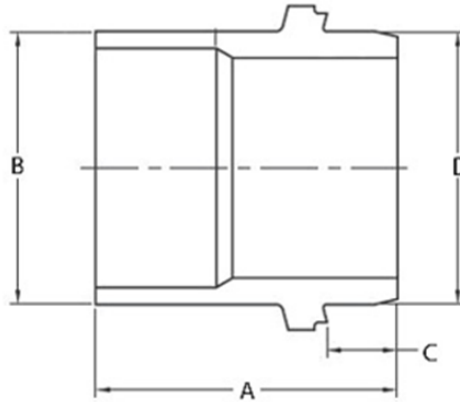


IPS

SDR 9 (standard dimension ratio)

255 PSI (MAOP @ 73.4° F)

Nominal Size	Note	A [in.]	B [in.]	C [in.]	D [in.]	Weight [lbs.]	Item Code	FM Class
3" IPS		9.00	3.500	2.34	3.960	1.65	100505	FM 250
3" IPS	w/stiffener	9.00	3.500	2.34	3.960	2.05	100507	FM 250
4" IPS		10.25	4.500	2.34	4.800	2.95	100513	FM 250
4" IPS	w/stiffener	10.25	4.500	2.34	4.800	3.35	100515	FM 250
6" IPS		11.31	6.625	2.34	6.900	6.20	100521	FM 250
6" IPS	w/stiffener	11.31	6.625	2.34	6.900	6.80	100523	FM 250
8" IPS		11.94	8.625	2.34	9.050	11.15	100529	FM 250
8" IPS	w/stiffener	11.94	8.625	2.34	9.050	12.70	100531	FM 250
10" IPS		13.56	10.75	2.34	11.10	18.50	100537	FM 250
10" IPS	w/stiffener	13.56	10.75	2.34	11.10	19.60	100539	FM 250
12" IPS		13.00	12.75	2.34	13.20	28.55	100545	FM 250
12" IPS	w/stiffener	13.00	12.75	2.34	13.20	37.50	100547	FM 250



DIPS

SDR 11 (standard dimension ratio)

200 PSI (MAOP @ 73.4° F)

Nominal Size	Note	A [in.]	B [in.]	C [in.]	D [in.]	Weight [lbs.]	Item Code	FM Class
4" DIPS		10.25	4.800	2.34	4.800	2.65	100508	FM 200
4" DIPS	w/stiffener	10.25	4.800	2.34	4.800	3.10	100510	FM 200
6" DIPS		11.31	6.900	2.34	6.900	5.70	100516	FM 200
6" DIPS	w/stiffener	11.31	6.900	2.34	6.900	6.33	100518	FM 200
8" DIPS		11.94	9.050	2.34	9.050	9.95	100524	FM 200
8" DIPS	w/stiffener	11.94	9.050	2.34	9.050	10.90	100526	FM 200
10" DIPS		13.56	11.10	2.34	11.10	16.30	100532	FM 200
10" DIPS	w/stiffener	13.56	11.10	2.34	11.10	17.35	100534	FM 200
12" DIPS		13.00	13.20	2.34	13.20	22.90	100540	FM 200
12" DIPS	w/stiffener	13.00	13.20	2.34	13.20	23.75	100542	FM 200
14" DIPS		14.00	15.30	2.22	15.30	34.00	100548	-----
14" DIPS	w/stiffener	14.00	15.30	2.22	15.30	36.00	100549	-----
16" DIPS		14.00	17.40	2.22	17.40	45.00	100552	-----
16" DIPS	w/stiffener	14.00	17.40	2.22	17.40	47.00	100553	-----
18" DIPS		15.22	19.50	2.63	19.50	59.00	100556	-----
18" DIPS	w/stiffener	15.22	19.50	2.63	19.50	62.00	100557	-----
20" DIPS		15.22	21.60	2.63	21.60	75.00	100560	-----
20" DIPS	w/stiffener	15.22	21.60	2.63	21.60	77.00	100561	-----

DIPS

SDR 9 (standard dimension ratio)

255 PSI (MAOP @ 73.4° F)

Nominal Size	Note	A [in.]	B [in.]	C [in.]	D [in.]	Weight [lbs.]	Item Code	FM Class
4" DIPS		10.25	4.800	2.34	4.800	3.00	100509	FM 250
4" DIPS	w/stiffener	10.25	4.800	2.34	4.800	3.45	100511	FM 250
6" DIPS		11.31	6.900	2.34	6.900	6.45	100517	FM 250
6" DIPS	w/stiffener	11.31	6.900	2.34	6.900	7.05	100519	FM 250
8" DIPS		11.94	9.050	2.34	9.050	11.75	100525	FM 250
8" DIPS	w/stiffener	11.94	9.050	2.34	9.050	12.55	100527	FM 250
10" DIPS		13.56	11.10	2.34	11.10	18.75	100533	FM 250
10" DIPS	w/stiffener	13.56	11.10	2.34	11.10	19.75	100535	FM 250
12" DIPS		13.00	13.20	2.34	13.20	27.20	100541	FM 250
12" DIPS	w/stiffener	13.00	13.20	2.34	13.20	28.60	100543	FM 250