

Product Family:	Injection Molded Butt Fusion Fitting	Fitting Design:	Equal Tee
Resin Status:	NSF Listed Bi-Modal Virgin Resin	Nominal Pipe Sizes:	3/4" – 12"
Resin Type:	ASTM D3350 designated PE3408/PE4710/PE100	Nominal Pipe Standard:	IPS and DIPS
Resin Cell Class:	4455574-CC3	Currently Available SDR's:	17, 11, 9, 7
Manufactured and tested to meet requirements of:		ASTM D2513, ASTM D3261, ANSI/AWWA C901 & C906, FM 1613, NSF 61	
For use on pipe and fittings conforming to:		ASTM D2513, ASTM D3035, ASTM F-714	

For Material and Testing information, please refer to our Molded Fitting Specification Sheet.

IPS

SDR 17 (standard dimension ratio)

125 PSI (MAOP @ 73.4° F)

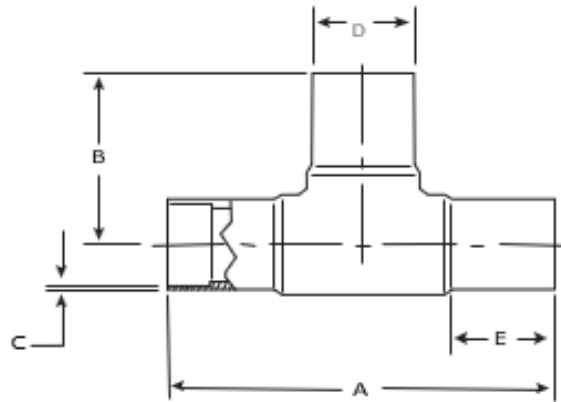
Nominal Size	A [in.]	B [in.]	C [in.]	D [in.]	E [in.]	Weight [lbs.]	Item Code	FM Class
3" IPS	11.81	5.910	0.206	3.500	3.54	1.50	100709	----
4" IPS	13.78	6.890	0.264	4.500	3.94	2.80	100713	----
6" IPS	18.11	9.060	0.390	6.625	4.72	7.50	100717	----
8" IPS	23.62	11.81	0.507	8.625	5.71	17.5	100721	----
10" IPS	27.56	13.78	0.632	10.75	6.30	28.3	100725	----
12" IPS	31.57	15.97	0.750	12.75	7.52	47.5	100727	----

IPS

SDR 11 (standard dimension ratio)

200 PSI (MAOP @ 73.4° F)

Nominal Size	A [in.]	B [in.]	C [in.]	D [in.]	E [in.]	Weight [lbs.]	Item Code	FM Class
¾ IPS	6.380	3.190	0.095	1.050	2.14	0.20	100700	----
1" IPS	6.620	3.310	0.120	1.315	2.18	0.20	100701	----
1 ¼" IPS	6.970	3.480	0.151	1.660	2.15	0.40	100702	----
1 ½" IPS	7.840	3.920	0.173	1.900	2.37	0.60	100704	----
2" IPS	8.660	4.330	0.216	2.375	2.48	1.00	100705	FM 200
3" IPS	11.81	5.910	0.318	3.500	3.54	1.50	100708	FM 200
4" IPS	13.78	6.890	0.409	4.500	3.94	3.90	100712	FM 200
6" IPS	18.11	9.060	0.602	6.625	4.72	40.5	100716	FM 200
8" IPS	23.62	11.81	0.784	8.625	5.71	23.2	100720	FM 200
10" IPS	27.56	13.78	0.977	10.75	6.30	39.4	100724	FM 200
12" IPS	31.57	15.97	1.159	12.75	7.52	66.3	100726	FM 200



IPS

SDR 9 (standard dimension ratio)

255 PSI (MAOP @ 73.4° F)

Nominal Size	A [in.]	B [in.]	C [in.]	D [in.]	E [in.]	Weight [lbs.]	Item Code	FM Class
2" IPS	6.380	3.190	0.264	2.375	2.47	1.10	100707	FM 250
3" IPS	6.620	3.310	0.389	3.500	3.54	2.40	100711	FM 250
4" IPS	6.970	3.480	0.500	4.500	3.94	4.50	100715	FM 250
6" IPS	7.840	3.920	0.736	6.625	4.72	12.3	100719	FM 250
8" IPS	8.660	4.330	0.958	8.625	5.71	25.1	100723	FM 250
10" IPS	11.81	5.910	1.194	10.75	6.30	47.15	100736	-----
12" IPS	13.78	6.890	1.417	12.75	7.52		100737	-----

IPS

SDR 7 (standard dimension ratio)

335 PSI (MAOP @ 73.4° F)

Nominal Size	A [in.]	B [in.]	C [in.]	D [in.]	E [in.]	Weight [lbs.]	Item Code	FM Class
2" IPS	6.380	3.190	0.339	2.375	2.47	1.00	100706	FM 335
3" IPS	6.620	3.310	0.500	3.500	3.54	2.90	100710	FM 335
4" IPS	6.970	3.480	0.643	4.500	3.94	5.50	100714	FM 335
6" IPS	7.840	3.920	0.946	6.625	4.72	14.7	100718	FM 335
8" IPS	8.660	4.330	1.232	8.625	5.71	32.1	100722	FM 335
10" IPS	11.81	5.910	1.536	10.75	6.30	58.9	100735	-----
12" IPS	13.78	6.890	1.821	12.75	7.52		100734	-----

DIPS

SDR 11 (standard dimension ratio)

200 PSI (MAOP @ 73.4° F)

Nominal Size	A [in.]	B [in.]	C [in.]	D [in.]	E [in.]	Weight [lbs.]	Item Code	FM Class
4" IPS	15.63	7.820	0.436	4.800	4.10	4.80	100728	FM 200
6" IPS	19.34	9.670	0.627	6.900	5.10	11.6	100729	FM 200
8" IPS	23.15	11.58	0.823	9.050	5.20	24.7	100730	FM 200
10" IPS	24.60	12.20	1.200	11.10	5.11	39.0	100731	FM 200
12" IPS	28.45	14.17	1.270	13.25	6.00	70.7	100732	FM 200