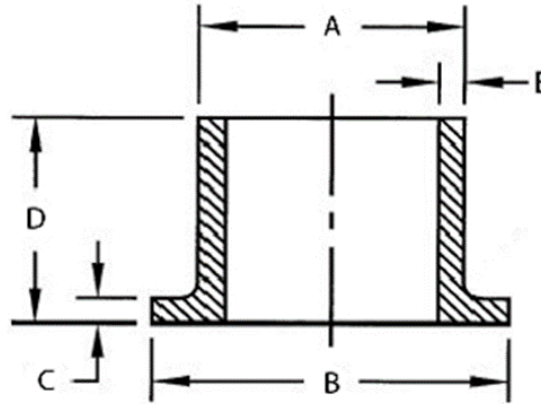


Molded Flange Adapter w/o Bevel

Dimension Sheet



Product Family:	Injection Molded Butt Fusion Fitting	Fitting Design:	Flange Adapter
Resin Status:	NSF Listed Bi-Modal Virgin Resin	Nominal Pipe Sizes:	2" – 36"
Resin Type:	ASTM D3350 designated PE3408/PE4710/PE100	Nominal Pipe Standard:	IPS and DIPS
Resin Cell Class:	4455574-CC3	Currently Available SDR's:	17, 11, 9, 7
Manufactured and tested to meet requirements of:		ASTM D2513, ASTM D3261, ANSI/AWWA C901 & C906, FM 1613, NSF 61	
For use on pipe and fittings conforming to:		ASTM D2513, ASTM D3035, ASTM F-714	

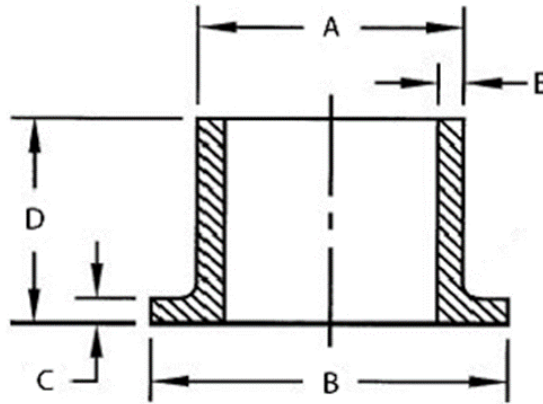
For Material and Testing information, please refer to our Molded Fitting Specification Sheet.

IPS

SDR 17 (standard dimension ratio)

125 PSI (MAOP @ 73.4° F)

Nominal Size	A (OD) [in.]	B [in.]	C [in.]	D (length) [in.]	E (wall) [in.]	Weight [lbs.]	Item Code	FM Class
2" IPS	2.375	3.940	0.40	5.710	0.140	0.30	100401	-----
3" IPS	3.500	5.000	0.42	5.820	0.206	0.55	100405	-----
4" IPS	4.500	6.000	0.54	6.540	0.265	1.10	100409	-----
6" IPS	6.625	8.500	0.80	8.000	0.390	2.75	100413	-----
8" IPS	8.625	10.63	1.02	9.020	0.507	5.50	100417	-----
10" IPS	10.75	12.75	1.29	10.01	0.632	9.10	100421	-----
12" IPS	12.75	15.00	1.55	10.75	0.750	13.55	100424	-----
14" IPS	14.00	17.50	1.62	12.00	0.824	20.00	100427	-----
16" IPS	16.00	20.00	1.85	12.00	0.941	26.00	100429	-----
18" IPS	18.00	21.12	2.08	12.00	1.059	30.00	100431	-----
20" IPS	20.00	23.50	2.31	12.00	1.176	38.00	100433	-----
24" IPS	24.00	28.00	2.77	14.00	1.412	66.00	100437	-----



IPS

SDR 11 (standard dimension ratio)

200 PSI (MAOP @ 73.4° F)

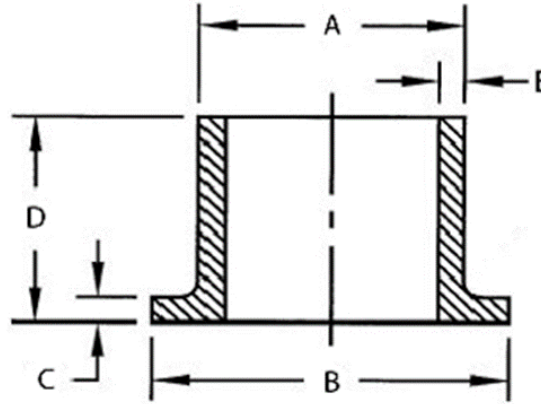
Nominal Size	A (OD) [in.]	B [in.]	C [in.]	D (length) [in.]	E (wall) [in.]	Weight [lbs.]	Item Code	FM Class
2" IPS	2.375	3.940	0.40	5.710	0.126	0.50	100400	FM 200
3" IPS	3.500	5.000	0.42	5.820	0.318	0.55	100404	FM 200
4" IPS	4.500	6.000	0.54	6.540	0.409	1.50	100408	FM 200
6" IPS	6.625	8.500	0.80	8.000	0.602	3.95	100412	FM 200
8" IPS	8.625	10.63	1.02	9.020	0.784	7.40	100416	FM 200
10" IPS	10.75	12.75	1.29	10.01	0.977	12.80	100420	FM 200
12" IPS	12.75	15.00	1.55	10.75	1.159	19.60	100423	FM 200
14" IPS	14.00	17.50	1.62	12.00	1.273	27.00	100426	----
16" IPS	16.00	20.00	1.85	12.00	1.455	36.00	100428	----
18" IPS	18.00	21.12	2.08	12.00	1.636	42.00	100430	----
20" IPS	20.00	23.50	2.31	12.00	1.818	54.00	100432	----
24" IPS	24.00	28.00	2.77	14.00	2.182	91.00	100436	----

IPS

SDR 9 (standard dimension ratio)

255 PSI (MAOP @ 73.4° F)

Nominal Size	A (OD) [in.]	B [in.]	C [in.]	D (length) [in.]	E (wall) [in.]	Weight [lbs.]	Item Code	FM Class
2" IPS	2.375	3.940	0.55	6.10	0.264	0.50	100403	FM 250
3" IPS	3.500	5.000	0.67	6.10	0.389	1.15	100407	FM 250
4" IPS	4.500	6.610	0.79	6.10	.0500	2.05	100411	FM 250
6" IPS	6.625	8.500	1.02	8.07	0.736	TBD	100415	FM 250
8" IPS	8.625	10.63	1.02	10.67	0.958	TBD	100419	FM 250
10" IPS	10.75	12.99	1.18	11.50	1.194	TBD	Coming Soon	----
12" IPS	12.75	15.75	1.38	10.83	1.417	TBD	Coming Soon	----



IPS

SDR 7 (standard dimension ratio)

335 PSI (MAOP @ 73.4° F)

Nominal Size	A (OD) [in.]	B [in.]	C [in.]	D (length) [in.]	E (wall) [in.]	Weight [lbs.]	Item Code	FM Class
2" IPS	2.375	3.940	0.55	6.10	0.339	0.65	100402	FM 335
3" IPS	3.500	5.000	0.67	6.10	0.500	1.30	100406	FM 335
4" IPS	4.500	6.610	0.79	6.10	0.643	2.25	100410	FM 335
6" IPS	6.625	8.500	1.02	8.07	0.946	5.95	100414	FM 335
8" IPS	8.625	10.63	1.63	18.68	1.232	11.00	100418	FM 335

DIPS

SDR 11 (standard dimension ratio)

200 PSI (MAOP @ 73.4° F)

Nominal Size	A (OD) [in.]	B [in.]	C [in.]	D (length) [in.]	E (wall) [in.]	Weight [lbs.]	Item Code	FM Class
4" DIPS	4.800	6.560	0.68	6.00	0.436	1.65	100446	FM 200
6" DIPS	6.900	8.600	1.00	8.00	0.627	4.35	100447	FM 200
8" DIPS	9.050	10.72	1.25	9.00	0.823	8.00	100448	FM 200
10" DIPS	11.10	12.15	1.35	9.00	1.009	12.20	100449	FM 200
12" DIPS	13.20	15.94	1.81	10.78	1.200	20.075	100450	FM 200